

# Eclipse/LocationTech/PolarSys Committer Orientation

The Eclipse Development Process

[eclipse.org/projects/dev\\_process](http://eclipse.org/projects/dev_process)

# The Eclipse Development Process

- Open source rules of engagement
- Governance, structure, definitions, reviews
- General framework for projects
- Day-by-day development rules/process is defined by the project

# Open Source Rules of Engagement

- Transparent
  - Project discussions, minutes, deliberations, project plans, plans for new features, and other artifacts are open, public, and easily accessible
- Open
  - The same opportunity to all
  - Everyone participates with the same rules
- Meritocracy
  - The more you contribute the more responsibility you will earn
  - Committer/Project lead elections

# Vendor Neutrality

- Open to all comers, including competitors!
- Vendor neutral resources and services
  - Project website
  - Issue tracker
  - Mailing lists and forums
  - Downloads
  - VCS/Git
- Committers must work in the open
- **Freedom of action**
  - GitHub services backed up on EF servers

# Three Communities

- Users
  - Users are, well... users
- Adopters
  - Individuals, groups, organizations
  - Build products, extensions, based on your project
- Developers
  - Contributors, committers

# Writing code is fun, but...

- Open source rules of engagement
  - Transparency, openness, meritocracy
- Have project-specific diversity goals
  - Building diversity takes work
- Actively court contributors
- Be responsive when they do come
  - “Kill with kindness”

# Contribution Guide

- Git, Gerrit, GitHub, ...
- Issue tracking (Bugzilla)
  - “Help wanted” issues
- Project plan
- How to build
- How to engage (mailing lists, forums, issues)
- Spend time with the community

# Contributions via Git

commit d6cf52411377a039fc2906378711091a26e932cb

Author: **Some Body** <[somebody@somewhere.com](mailto:somebody@somewhere.com)>

Date: Wed May 29 16:17:36 2013 +0200

**[123456]** Hide unwanted common navigator action bar items

This change hides unwanted 'Link with Editor' and 'Customize View...' items from the local toolbar and the view menu.

See bug 409722 for restoring the feature of activating the editor when changing the selection using 'Link with Selection'.

Bug: <https://bugs.eclipse.org/123456>

Change-Id: Ia2bd5091303d1b0a738157effc24e4dac5a7d0c7

Also-by: Some Bodyelse <[somebodyelse@nowhere.com](mailto:somebodyelse@nowhere.com)>

Signed-off-by: **Some Body** <[somebody@somewhere.com](mailto:somebody@somewhere.com)>



# Handling Git Contributions

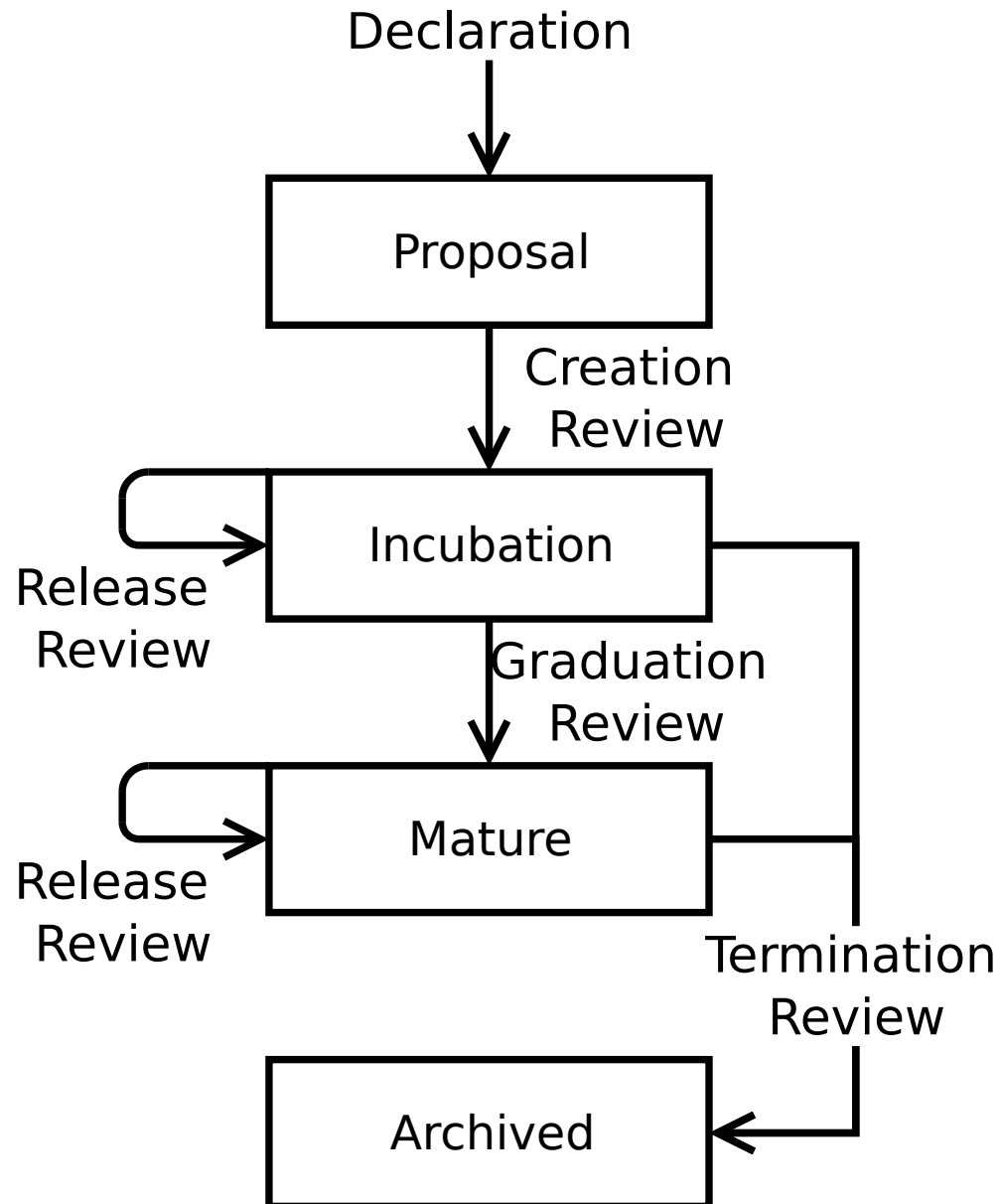
- Git/Gerrit will check for CLA/sign-off
- GitHub will warn if CLA or sign-off is missing
- Engage with IP Team if required

# Contributor License Agreement

- Contributors must digitally sign the CLA
  - You have authored 100% of the content
  - You have the necessary rights
  - Provided under the license(s) associated with the particular Eclipse Foundation project
  - Your contributions are public
- Contributors must “sign-off” on each commit

<https://www.eclipse.org/legal/CLA.php>

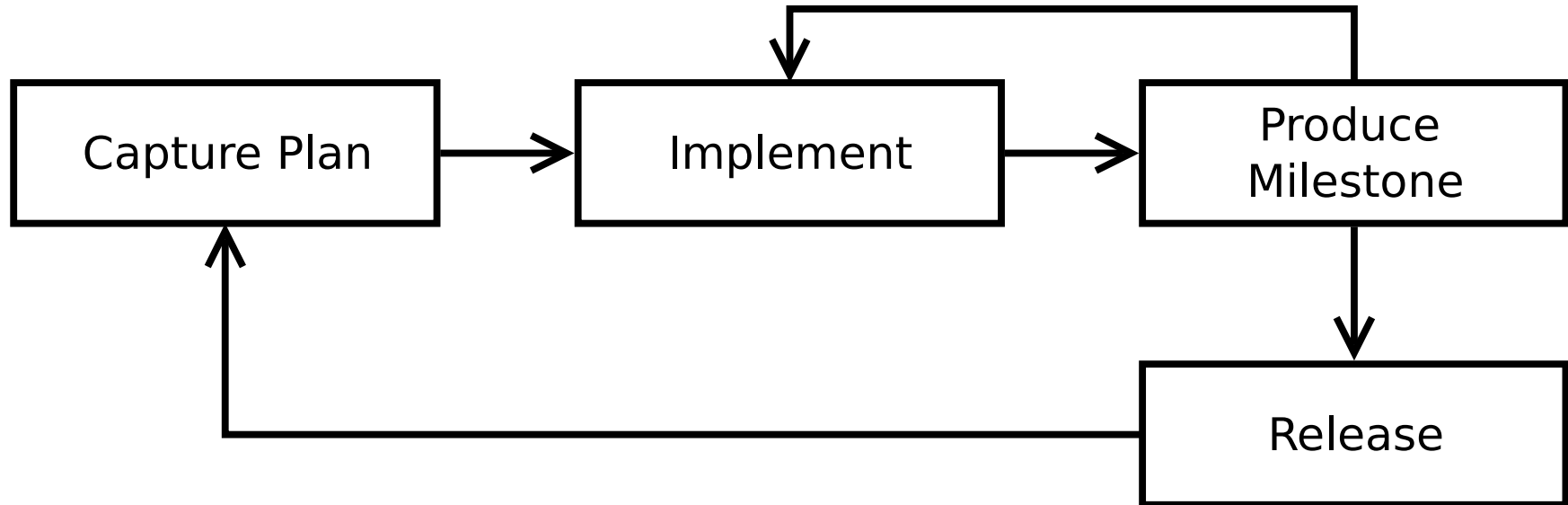
# Project Lifecycle



# Project Leadership

- Project lead(s)
  - Management, technical leadership
  - Primary liaison with PMC and EMO
- Project Management Committee (PMC)
  - Technical approval of IP contributions
  - Approval of releases
  - Project oversight, general responsibility
- EMO
  - Overall responsibility to manage processes and maintain services
  - Eclipse Foundation Staff, Architecture and Planning Councils

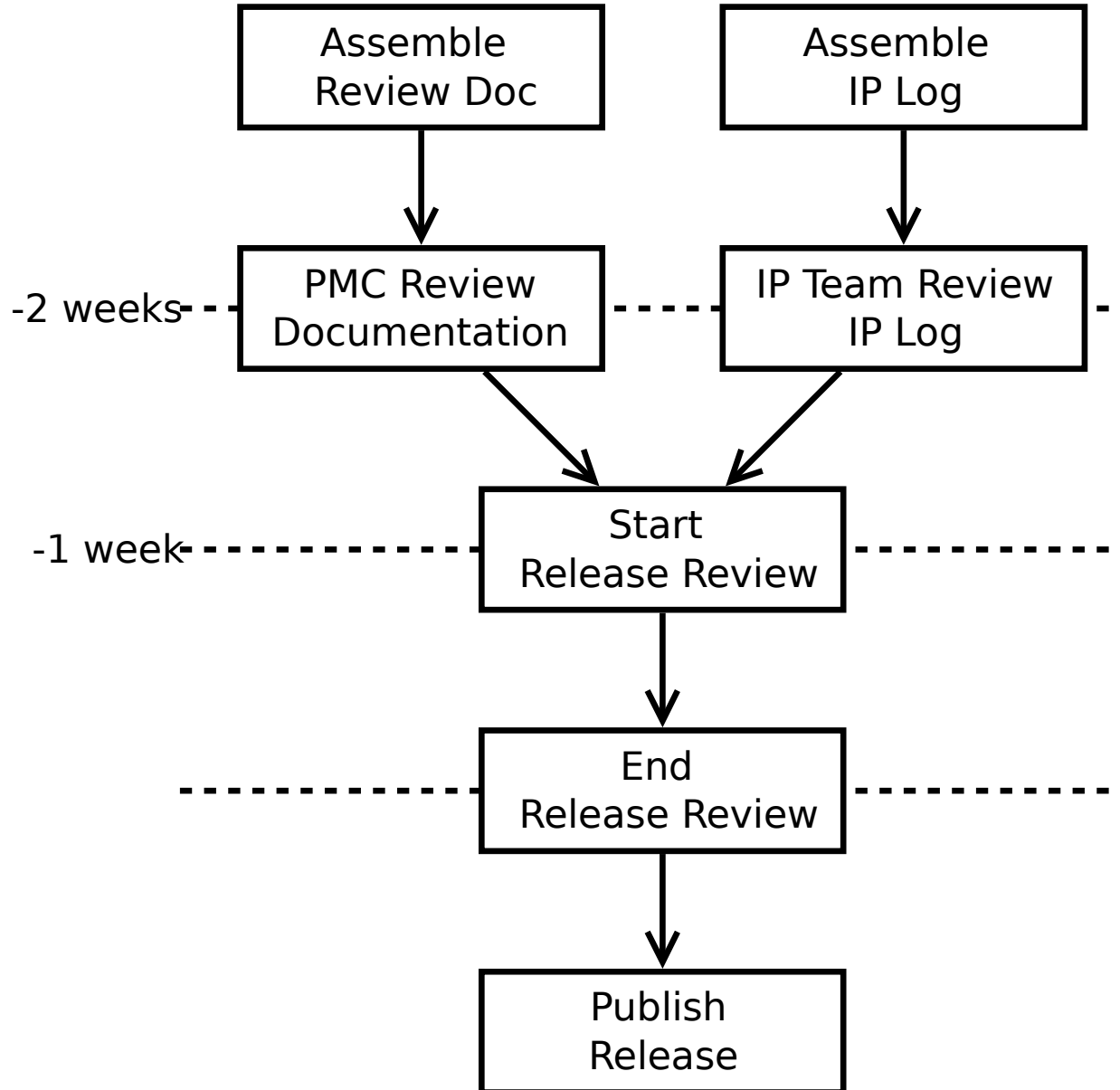
# Releases



# Release Review

- Major/minor releases
  - Release review
  - IP Log approval
  - Plan to spend time planning/documenting release
- Service/Bugfix-only releases
  - No review
  - No IP Log approval

# Release Review







# IP Terms

- Initial Contribution
- Contribution Questionnaires (CQs)
- Piggyback CQ
- IPZilla
- Parallel IP

# IT Services

- Connect with the Webmaster for IT support
  - Git repositories, builds, downloads
  - Permissions
- Connect via Bugzilla (Community)
- [webmaster@eclipse.org](mailto:webmaster@eclipse.org)

# Eclipse Project Handbook

- All-in-one guide for project leads and committers
- Starting a new project
- Forge-specific variations:
  - [eclipse.org/projects/handbook](https://eclipse.org/projects/handbook)
  - [eclipse.org/projects/handbook/polarsys.html](https://eclipse.org/projects/handbook/polarsys.html)
  - [eclipse.org/projects/handbook/locationtech.html](https://eclipse.org/projects/handbook/locationtech.html)

# Incubation Mailing List


- Connect with other incubating projects
- Connect with mentors
- <http://dev.eclipse.org/mailman/listinfo/incubation>
- [incubation@eclipse.org](mailto:incubation@eclipse.org)

# Project Metadata

- Used for discovery and drives various processes and systems
  - e.g. IP Log generator, notices to members and committers
- Description, scope, logo, technology type
  - “Elevator pitch”
- Source code, builds, issue tracker
- Releases, relationships to other projects, build technologies

# Project Metadata: The PMI

Welcome, Wayne Beaton [The Eclipse Foundation] [Edit my account](#) [Eclipse CLA](#) [Log out](#)



GETTING STARTED MEMBERS PROJECTS MORE-

Search eclipse.org

[DOWNLOAD](#)

HOME / PROJECTS / TOOLS PROJECT / BUILDSHIP: ECLIPSE PLUG-INS FOR GRADLE

## Buildship Eclipse Plug-ins for Gradle

**Overview** Downloads Who's Involved Developer Resources Governance



Contact Us Edit Devel

### Buildship

Buildship is a collection of Eclipse plug-ins that provide support for building software us

Buildship aims to provide a deep integration of Gradle into Eclipse. Buildship also aims to make the Eclipse IDE more powerful by allowing the user to do more from within the IDE.

Buildship 1.0 is targeted towards Gradle users. Later versions will target Gradle build masters.



**COMMITTER TOOLS**

The following commands are available to project committers:

*(Red arrows point from the 'Overview' tab and the 'COMMITTER TOOLS' section to the main content area)*

<http://projects.eclipse.org/projects/<projectId>>

# Keep Project Information Up-to-date

- Project and release metadata, website, downloads
- Project code must be buildable
- Have a contribution guide
  - “Getting started”
  - CONTRIBUTING file in project repositories
  - <https://bugs.eclipse.org/397644>

# Things that We Didn't Talk About

- Committer and Project Lead Elections
- Graduation from Incubation Phase
- Committer Paperwork
- Starting an open source project
- IP Logs



# Links and Stuff (1/3)

- Cross Project Issues Dev mailing list
  - <https://dev.eclipse.org/mailman/listinfo/cross-project-issues-dev>
- Project-specific mailing lists
  - <https://dev.eclipse.org/mailman/listinfo/<short-name>-dev>
  - <https://dev.eclipse.org/mailman/listinfo/<pmc-short-name>-pmc>
- Development Resources
  - [http://wiki.eclipse.org/Development\\_Resources](http://wiki.eclipse.org/Development_Resources)

# Links and Stuff (2/3)

- Eclipse Development Process
  - [http://www.eclipse.org/projects/dev\\_process](http://www.eclipse.org/projects/dev_process)
- Committer Due Diligence Guidelines
  - <http://www.eclipse.org/legal/committerguidelines.php>
- Eclipse Project Handbook
  - <http://www.eclipse.org/projects/handbook>
- Contribution Guide
  - [https://bugs.eclipse.org/bugs/show\\_bug.cgi?id=397644](https://bugs.eclipse.org/bugs/show_bug.cgi?id=397644)
  - [http://git.eclipse.org/c/egit/egit.git/plain/SUBMITTING\\_PATCHES](http://git.eclipse.org/c/egit/egit.git/plain/SUBMITTING_PATCHES)
  - [http://wiki.eclipse.org/EGit/Contributor\\_Guide](http://wiki.eclipse.org/EGit/Contributor_Guide)

# Links and Stuff (3/3)

- Incubation Branding
  - [http://wiki.eclipse.org/Development\\_Resources/HOWTO/Conforming\\_Incubation\\_Branding](http://wiki.eclipse.org/Development_Resources/HOWTO/Conforming_Incubation_Branding)
- Handling Git/Gerrit Contributions
  - [http://wiki.eclipse.org/Development\\_Resources/Handling\\_Git\\_Contributions](http://wiki.eclipse.org/Development_Resources/Handling_Git_Contributions)
- Download Scanner
  - <http://www.eclipse.org/projects/tools/downloads.php>
- Bugzilla Contributions Review
  - [http://www.eclipse.org/projects/tools/ip\\_contribution\\_review.php](http://www.eclipse.org/projects/tools/ip_contribution_review.php)
- IP Logs
  - [http://wiki.eclipse.org/Development\\_Resources/IP\\_Log](http://wiki.eclipse.org/Development_Resources/IP_Log)
- IP Log Generator
  - [http://wiki.eclipse.org/Development\\_Resources/Automatic\\_IP\\_Log](http://wiki.eclipse.org/Development_Resources/Automatic_IP_Log)
  - [http://www.eclipse.org/projects/ip\\_log.php](http://www.eclipse.org/projects/ip_log.php)