

IoT / Intel

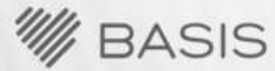
Paul.Guermontprez@intel.com
Software Engineer
Paris-Toulouse





The expert
craftsmanship of TAG
Heuer meets the
innovative performance
of Intel Inside®





Advanced tracking technology,
simplified—for a better picture of
your performance.

[Learn more about Basis Peak™ fitness and sleep tracker ›](#)
[Buy now ›](#)





Smart Objects

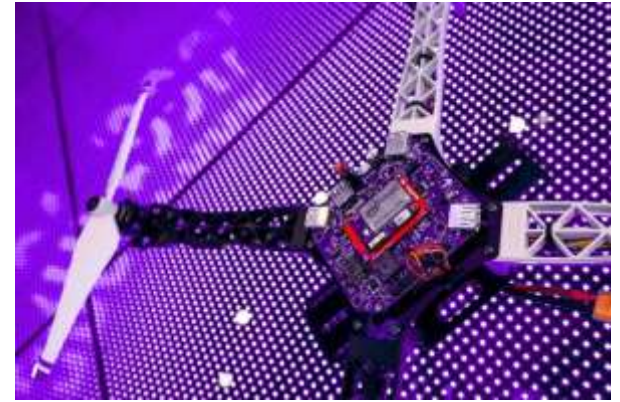
iothinks
Your Life, Your Sound



Drones



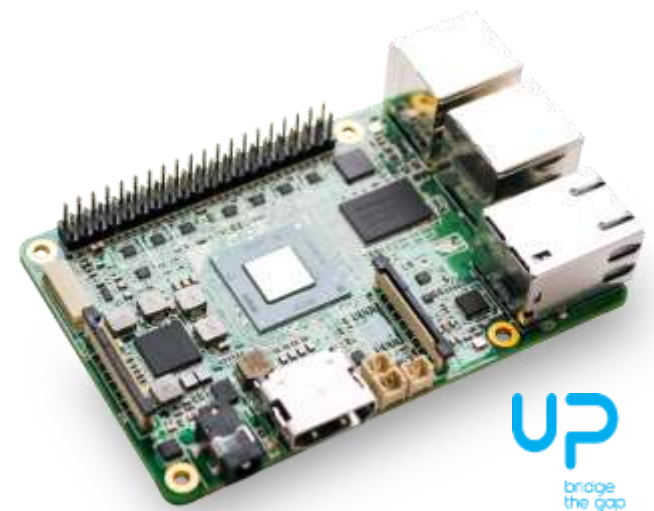
YUNEEK
ELECTRIC AVIATION



Easy Prototyping, Fast Production



If you need power ...



UP
bridge
the gap



intel
Software

Intel Edison

Module : WiFi, BLE, GPIO, linux

A linux wireless PC with GPIO

Great as aggregator,
compact gateway
or powerful IoT solutions

Plug and play module :
quickly develop your board

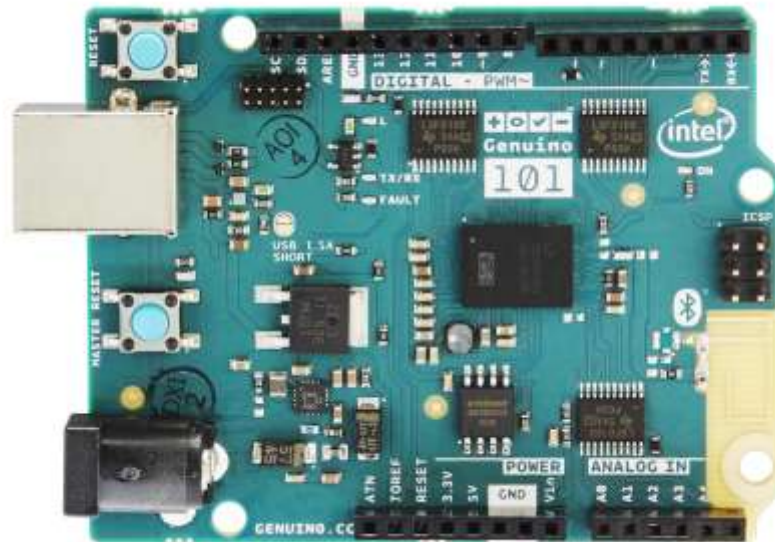
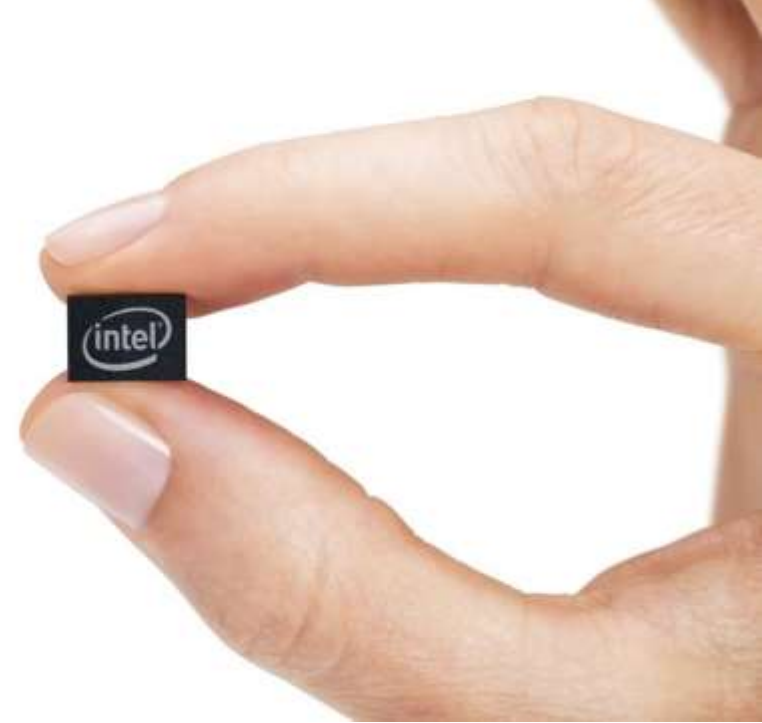


Intel Curie Arduino 101 / Genuino 101

BLE, USB, accelerometer, gyros,
neural network for
fast pattern matching

Simple as a microcontroller,
versatile as a small PC

Easy path
from prototyping
to production



Software

Development :

- Arduino / Genuino : IDE
- NodeJS : Intel XDK IoT Edition
- C/Python : Eclipse IDE
- Any language from command line : ssh/serial

OSes : open source or commercially supported

Embedded performance and debug : Intel System Studio

Cloud : IoT analytics, WindRiver Helix



AN INTEL COMPANY



We can help !

How ?

Technical expertise and consulting,
access to early prototypes

Co marketing : go to
CES / MakerFaire / CES / IFA / CeBit / ... on Intel's booth !

Great developer events, contests ... and Intel Capital



We noticed ...

Opportunities

Local : 6lowpan-thread, easy BLE

OS : Zephyr Project, Google Brillo

Lib : ARToolkit/DAQRI

Network : IoTivity, (Google weave)

Hw : Curie, hybrid processing, FPGA



Typical tech problems / strengths

Bad choice of connectivity for short range,
WiFi for everything is not always the solution

Bad installation procedure, usage model not thought ahead

Bad balance between computing power Edge/GW/Server,
not using existing devices enough

Ease of maintenance and OTA upgrade
often not even a criteria ... ?

Mostly idea driven, not technical potential driven/adapted

Typical biz problems / strengths

Not using free resources (like Intel !)

Techy CEO are not looking for best ROI, that's dangerous.

TTM can be reduced, if that's a priority from the beginning.

Industrialization can be easier if you ask your partners

Thanks

Paul.Guermonprez@intel.com



