



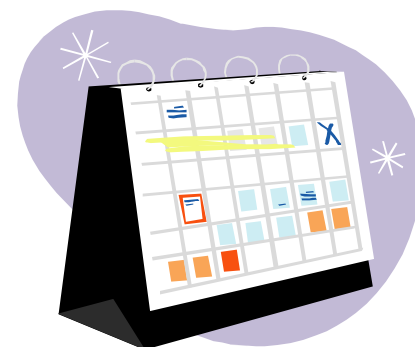
Aperi Community Call

January 31, 2008



Agenda

- **2007 Accomplishments**
- **Maintaining the Momentum, Spring SNW**
- **Closing in on the 2008 Roadmap**
- **Open Standards Integration**



Milestones and Accomplishments for 4Q2007 and 1Q2008

Development

- Delivered SRM R0.4:
 - Europa Migration
 - Installation Improvements
 - SWT Browser Widget
 - Discovering paravirtualized block devices
 - IBM DS CIMOM Version 5.2
 - Running the agent inside a Virtual Machine
- Delivered first release of the SAN Simulator:
 - Simulation through snapshot mechanism
 - Simulation of IBM DS6K, DS8K through configuration
- January Community Technical Meeting
 - LIC & SSO Architecture Overview

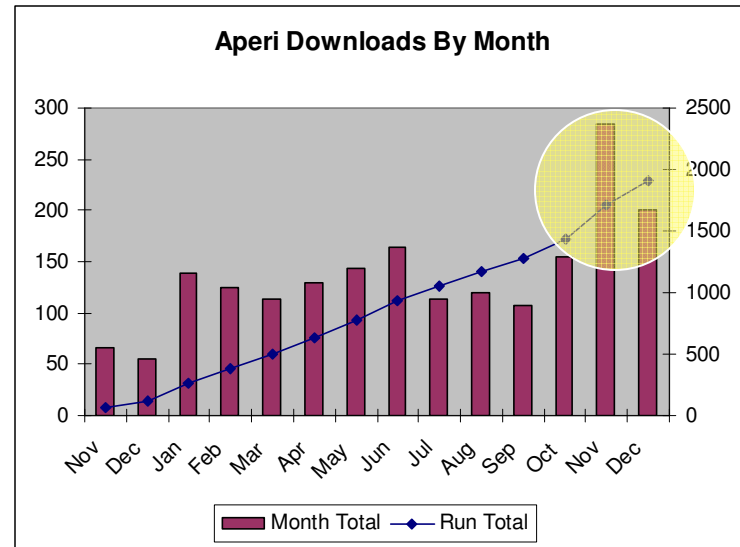
Marketing

- Participated in Fall SNW:
 - SRM presentation in Storage Management track
 - Aperi booth in SNW Expo
 - Six Aperi companies participated
- Held marketing community meeting
 - Set direction for 2008
 - Interoperation of our products
 - Single Sign On and Launch In Context themes
- Created 2 Aperi tutorials:
 - Installation
 - Discovery/probe
- January Community Marketing meeting
 - 2008 Roadmap closure

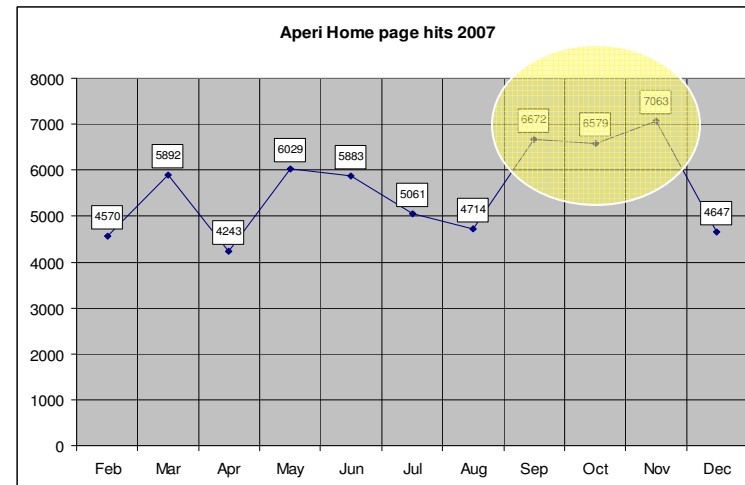
Aperi Community Momentum



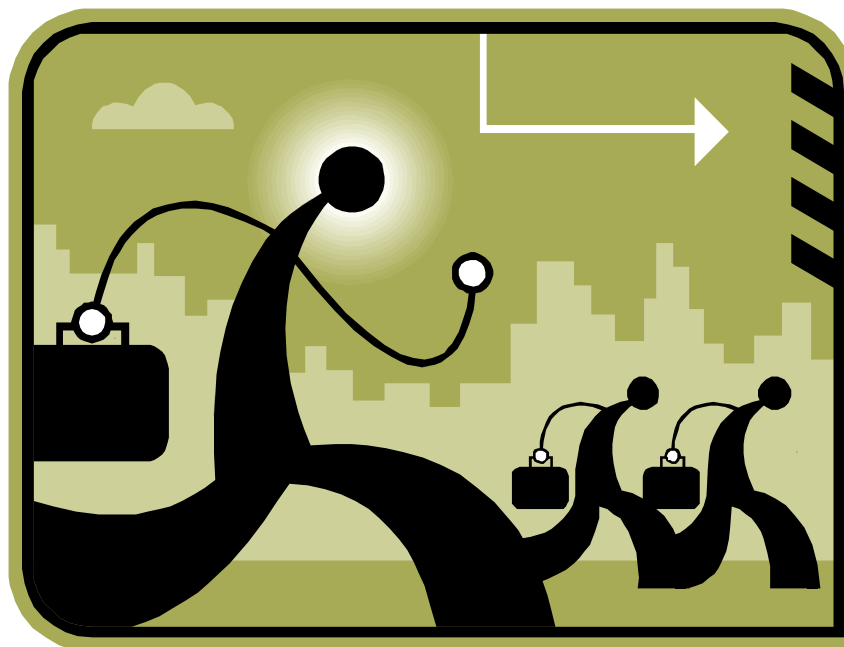
- Over 2100 code downloads (includes January 08)
 - November and December showed **record** download activity!
- Mailing lists: 101 aperi-news and 78 aperi-dev subscribers (72 and 52 respectively in 9/07)



- Over 60,000 home page hits
 - September through November showed **record** Web Activity!
- Over 250 views of Aperi webcast



Maintaining the Momentum, Spring SNW



SNW Spring 2008 Sponsorship

Keep the Momentum Going

- Sponsorship level similar to that of last 2 SNWs

- Live code demos, trifolds, news on community developments

- Requires funding and personnel from across community

- Silver level - \$2000

- Gold level - \$4000

- Platinum level - \$7000

- Need to start organizing now

SNW Spring 2008	Participating Partners Sponsorship
Cost	\$10,750
Booth size	8' x 4'
Includes:	6'x2' skirted table Standard electrical drop 2 chairs, 1 wastebasket
Plus	Company name listed on the Conference Website in the full Sponsor/Exhibitor text listing. 2 full conference passes 5 full conference passes for IT end users On-site visibility with logo listing on agenda, conference guide, and 75-word listing in conference guide
Additional Rentals	
Computer kiosks (2)*	\$592.13
Monitor, Hardwired keyboard and optical mouse*	\$670.00
t-shirts/promo items	\$1,000.00
Internet connectivity	\$1,460.00
Lead retrieval scanner	\$410.00
SUBTOTAL	\$4,132.13
SUBTOTAL	\$14,882.13
Trifold printing 300	???
TOTAL	\$14,882.13

* Estimate based on Fall SNW pricing

Participating Partner Booth

- Recommend replacing table with 2 computer kiosks
- 3' x 6' custom banner with logo and key bullets

Fig. 20C

Participating Partner Booth Layout
(8'x4')



Orion Computer Kiosk

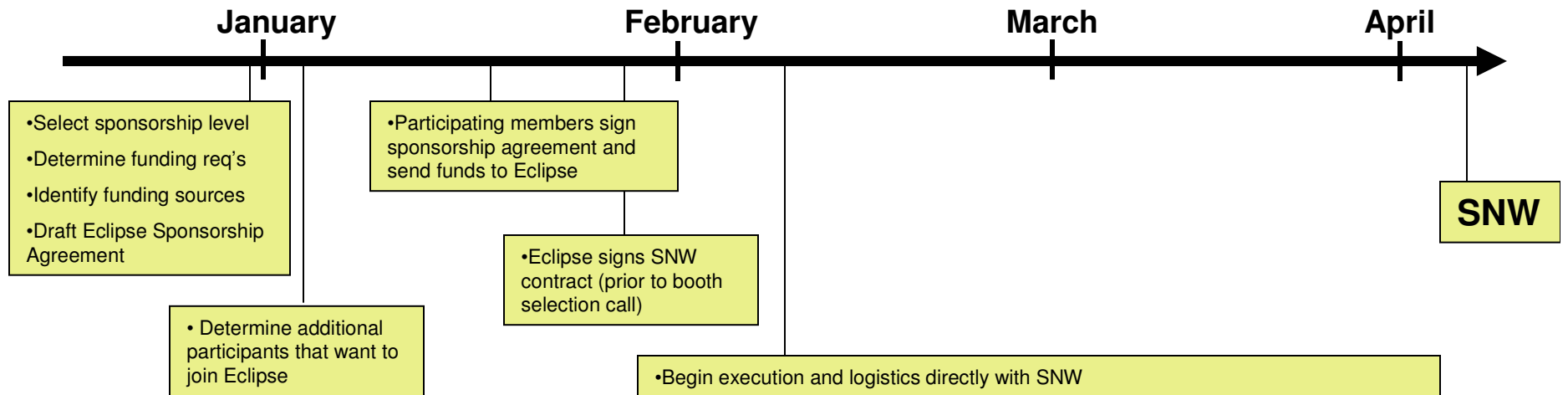
Black
28"W 28"L 40.5"H
N75079

Pedestal for
computer demo
with keyboard tray
and interior storage.
(Computer not included.)



Event Timeline

SNW Spring 2008
April 7-10
Orlando, FL



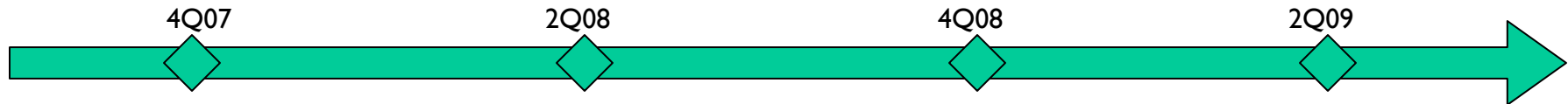
Aperi 2008 Roadmap update



Aperi Roadmap modification process

1. Announce/Kickoff roadmap update and gather input at a Community meeting.
2. Post announcement to mailing lists.
3. Community reviews existing roadmap and other project artifacts
4. Solicit requests for any new candidate line items
5. Prioritize line items
6. Assign resources to high priority items and timeframe for completion
7. Map line items across time in road map
8. Obtain final agreement from community (vote)

Aperi Roadmap - Current



4Q07

- SRM R0.4
 - Europa Migration
 - Installation Improvements
 - SWT Browser Widget
 - Discovering paravirtualized block devices
 - IBM DS CIMOM Version 5.2
 - Running the agent inside a Virtual Machine
 - Aperi tutorials
- SAN Simulator R0.1- Initial Contribution
 - Simulation through snapshot mechanism
 - Simulation of IBM DS6K, DS8K through configuration

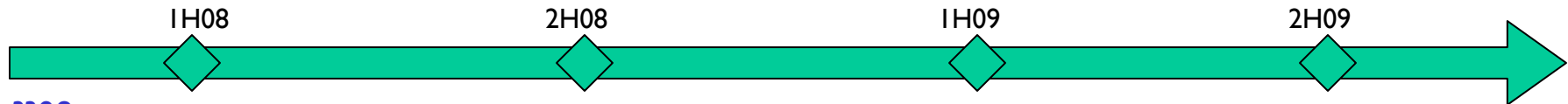
2Q08

- SRM R0.5
 - SMI-S host profile support
 - Virtual fabric / FC security specification
 - Launch In Context
 - Initial WSDM event support
 - Remove dependency on Java Help
 - Support for other clusters e.g. Linux HA
 - Solaris enablement
- SAN Simulator R0.2
 - Server infrastructure to support performance profile
 - Block Server Performance support for IBM DS6K and DS8K
 - what-if-analysis using BSP simulation

High priority candidates for follow-on milestones:

- SRM
 - Ganymede Migration
 - Broad SMI-S profile support
 - SMI-S Fabric & Switch profiles
 - SMI-S NAS profile
 - Unified Storage support (FC, NAS composite view)
 - SMI-S 1.2
 - CTP Testing Fabric, NAS, and host profiles
 - BIRT Viewer 2.2
 - Discovering iSCSI storage via ISNS
 - Oracle support
 - Framework components
 - CIM based provider tool
 - Run Aperi agent inside a VM
- SAN Simulator
 - Indication Support (Event and lifecycle)

Aperi Roadmap – DRAFT



??08

- **SRM RIM5**

- SMI-S host profile support
- Virtual fabric / FC security spec
- Launch in Context
- Single Sign On
- Initial WSDM event support
- Remove dependency on JavaHelp
- Discover and manage Linux HA cluster
- Solaris enablement

- **SAN Simulator RIM2**

- Server infrastructure to support performance profile
- Block Server Performance support for IBM DS6K and DS8K
- what-if-analysis using BSP simulation

High priority candidates for follow-on milestones:

- **SRM**

- Ganymede Migration
- Broad SMI-S profile support
 - SMI-S Fabric & Switch profiles
 - SMI-S NAS profile
- Unified Storage support (FC, NAS composite view)
- SMI-S 1.2
- CTP Testing Fabric, NAS, and host profiles
- BIRT Viewer 2.2
- Discovering iSCSI storage via ISNS
- Oracle support
- Framework components
- CIM based provider tool
- Run Aperi agent inside a VM

- **SAN Simulator**

- Indication Support (Event and lifecycle)

Open Standards Integration



Open Standards Integration

- Reinforce relevance of Aperi through standardization of implementations
 - Customer are looking for standard compliance
 - ...but it's more than just an SMI-S checkbox...
 - we need to participate with and *drive* standards
- Opens up avenues of participation in Aperi
 - You don't have to write code to help out!
- How can you help?
 - We're looking for participation in a series of workgroups that we'll be forming to determine how to integrate these ideas with open standards
 - I will be sending out call for participation emails to aperi-dev mailing list; please reply to the email if you're interested

Proposal 1: Launch in Context (LIC) Enablement

- Objectives of Workgroup
 - Create standard mechanism to enable registration and discovery of device launch points for LIC feature

- Extending the SNIA Access Points Subprofile
 - The Access Points Subprofile describes entry points for element managers representing the entire device (single entry points)
 - We need to extend the simple model to match LIC requirements

- Areas of Discussion
 - Specify means to bind device model with access points better
 - Define LIC parameters to be registered
 - Define authorization parameters (enable single sign-on) to be registered

Proposal 2: Production Ready Task Force

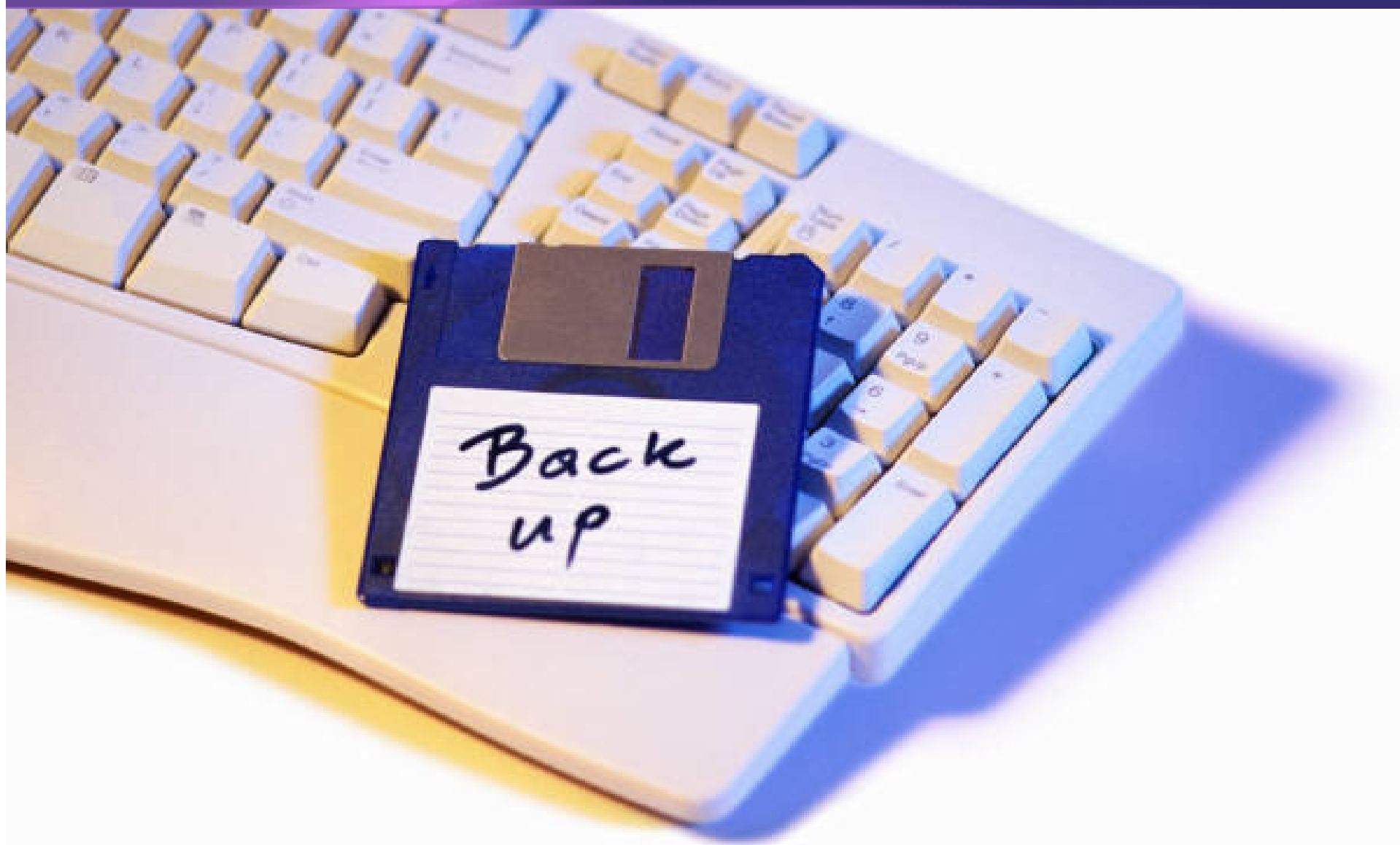
- Objective of Workgroup
 - The SNIA Production Ready Task Force was formed to examine practical, real-world techniques to make SMI-S work better for real products
 - We have a lot of experience within Aperi related to client-side interaction with SMI-S Agents

- Areas of Discussion
 - Work together within the Aperi organization to identify issues and relate them back to the SNIA Production Ready Task Force
 - Example Topics: backward compatibility (lack of test coverage), vendor extensions (and versioning), scalability/performance, specification churn

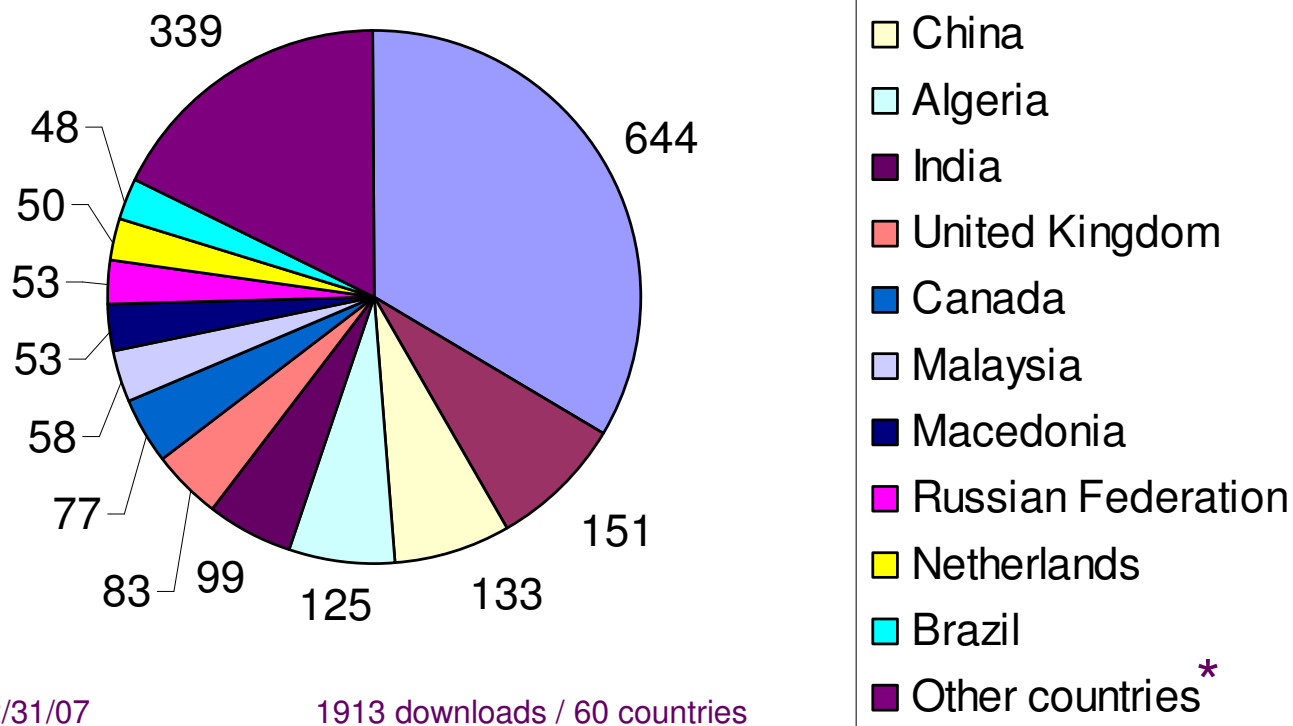
Proposal 3: CMDB Standardization

- Objective of Workgroup
 - Create a plan for componentizing the database repository of Aperi as a CMDB enabling a common repository between many storage and systems management applications

- Areas of Discussion
 - Work with DMTF CMDBf (federation) to help define the CMDB structure and interfaces
 - The CMDB holds information that LIC uses to represent the overall flow from one application to another; determine how we can leverage this information
 - System's management tools like COSMOS also need a CMDB; working together with the COSMOS project ties our two projects together opening opportunities for cooperation on other areas as well
 - The interfaces and structure of the CMDB provide a common event and data format that can be pushed down into the data sources. This gives us an opportunity to provide real-world expertise into the SNIA Standard Messages and Common Event Formatting (e.g., WEF) domains.

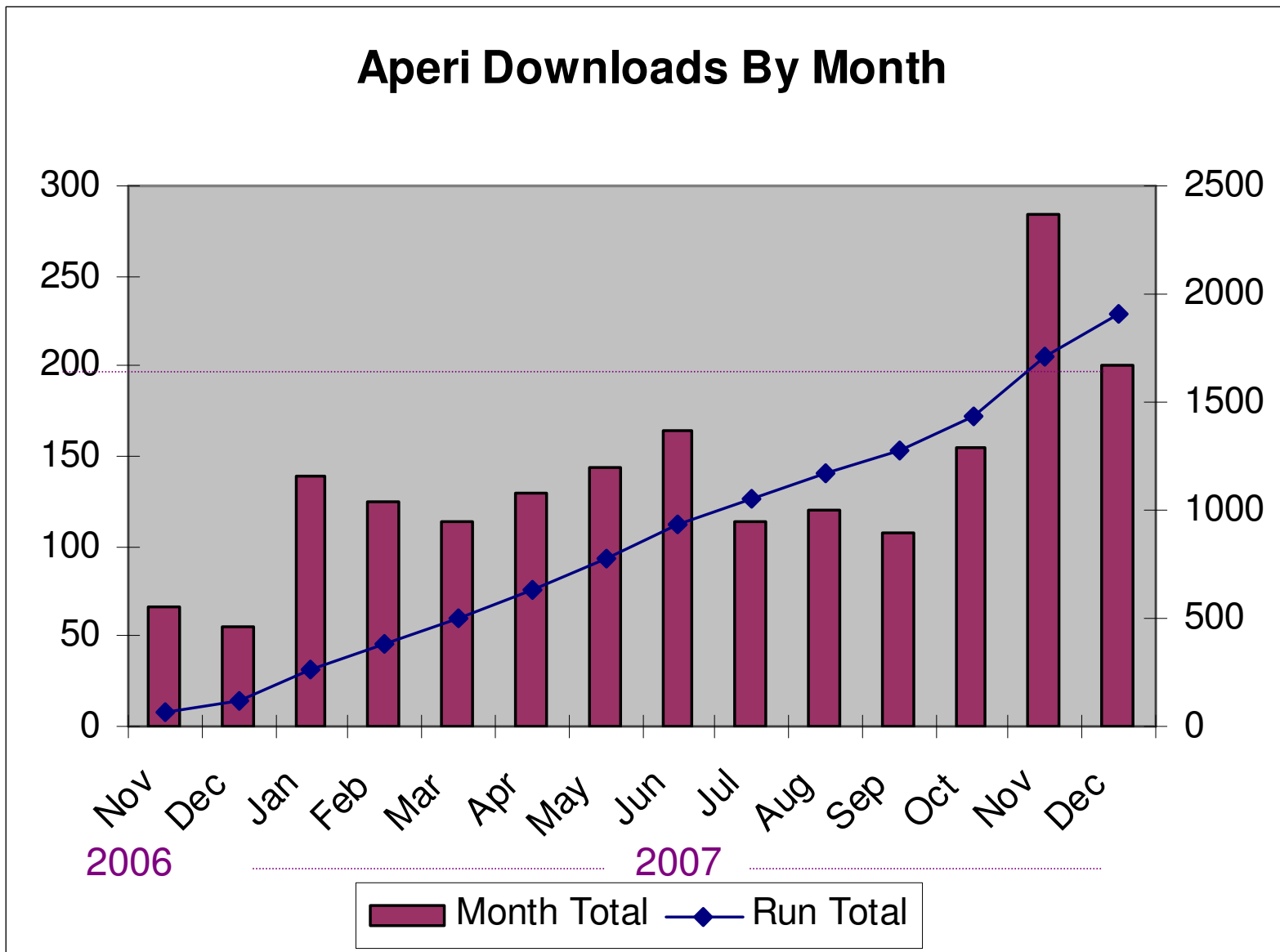


Aperi Downloads by Country



•48 Countries with 40 or less downloads: *Israel, Republic of Korea, France, Japan, Italy, Indonesia, Taiwan, Turkey, Austria, Switzerland, Ireland, Hungary, Australia, Belgium, Hong Kong, Mexico, Tunisia, Sweden, Thailand, South Africa, Norway, Spain, Bulgaria, Denmark, Greece, Lithuania, Poland, Finland, Ukraine, Romania, Ghana, Czech Republic, Venezuela, Philippines, Albania, Pakistan, Colombia, Portugal, Saudi Arabia, New Zealand, Sri Lanka, Singapore, Cyprus, Vietnam, Bangladesh, Peru, Morocco*

Aperi Downloads By Month



Aperi Home page hits 2007

