

# Eclipse Scout

## Create business applications

**Eclipse Scout substantially reduces development time for both client and server software in a service oriented environment. User friendly applications are easily implemented with Scout's comprehensive set of user interface components. Completely based on Java/Eclipse, Scout Applications integrate well in most IT environments.**



## Simple. Stable. Flexible.

### Simple.

Eclipse Scout is friendly to Java developers. Implementation and deployment of a "hello world" application takes less than 10 minutes using the Scout SDK tooling provided.

Developers can create their own complex multi-tier business application after only twodays training. Working with Scout SDK requires only a rough understanding of the underlying Eclipse/OSGi/J2EE technologies.

### Stable.

Scout applications run stable in every environment. The framework offers a wide range of out-of-the-box functionalities. It is easy to access relational databases and other persistent storage. Providing and consuming web services are supported directly by the framework.

The developer is free to choose between SWT, Swing, or RAP (Web) as a UI technology, depending on the clients' requirements. Scout supports all three.

### Flexible.

The Eclipse Scout framework is based on standard Eclipse programming idioms, such as OSGi services and extension points. For full flexibility Scout allows you to implement your own customized UI widgets.

As Scout applications work without any meta-model and are completely based on Java classes they can easily be combined with legacy services, screens or similar customer requirements.

### Training, consulting, and support from the experts.

Scout has been developed at BSI for 10 years. In 2011, BSI has published Scout under the Eclipse Public License (EPL). If you decide to prototype Eclipse Scout applications, ask BSI for training and consulting to maximize your value. For further information please contact Matthias Zimmermann at [scout@bsiag.com](mailto:scout@bsiag.com). [www.bsiag.com/eclipse](http://www.bsiag.com/eclipse), [www.eclipse.org/scout](http://www.eclipse.org/scout)

# Scout Runtime

## Boost your productivity

**Eclipse Scout allows you to focus on the added value your software creates. Many recurring technical aspects are already addressed by the core concepts of Scout. In addition, Scout comes with proven utility functions and a large collection of mature UI components.**

Eclipse Scout is ideally suited to build modern and user friendly business applications. The Scout runtime framework covers most recurring aspects of implementation on both the client and the server side.

Scout supports various UI technologies out of the box. Depending on your needs, you decide for building web applications, based on Eclipse RAP, or rich clients, based on either Swing or SWT. Next to come is Scout support for mobile platforms.

For seamless integration into a service oriented IT architecture Scout has direct support for web services based on JAX-WS. To access relational databases other than Apache Derby, connectors are also available for non-EPL compatible databases such as Oracle, MySQL, PostgreSQL, or DB2.

Completely based on Java/Eclipse standards, Scout Applications run stable in most web servers and are easy to integrate in all IT environments.

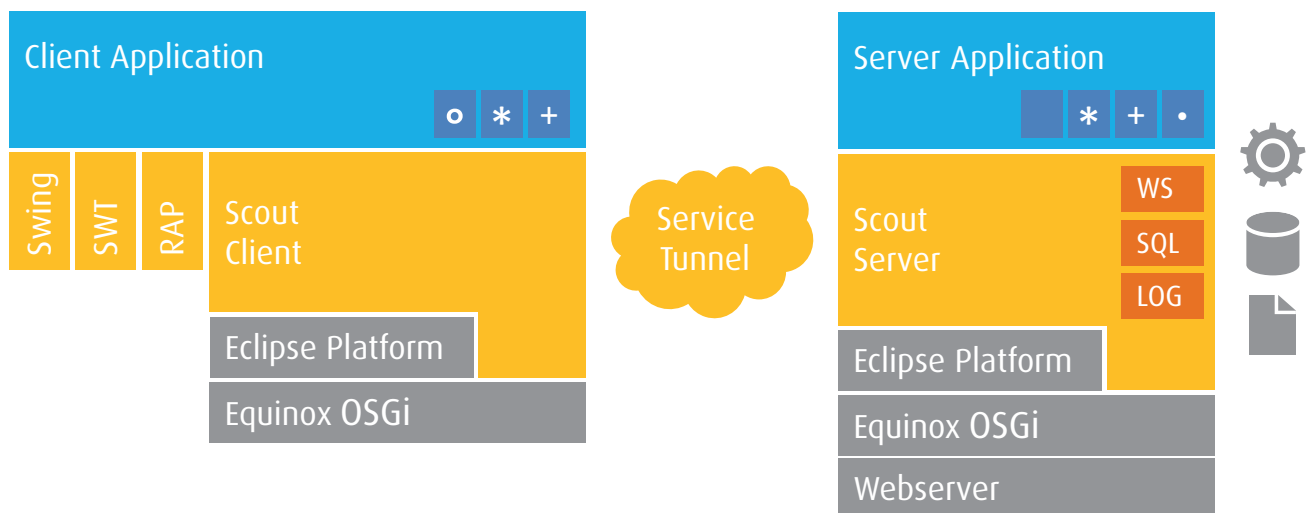


Illustration of a typical Scout application architecture: The client part (on the left) runs on top of the eclipse platform, either as a rich client (Swing/SWT) or a web client (RAP). The service tunnel realizes the communication to the Scout server (on the right) which runs on standard web servers and offers connectivity to back end. Access to external web services (WS) and databases (SQL) is directly supported by the framework.

# Scout SDK

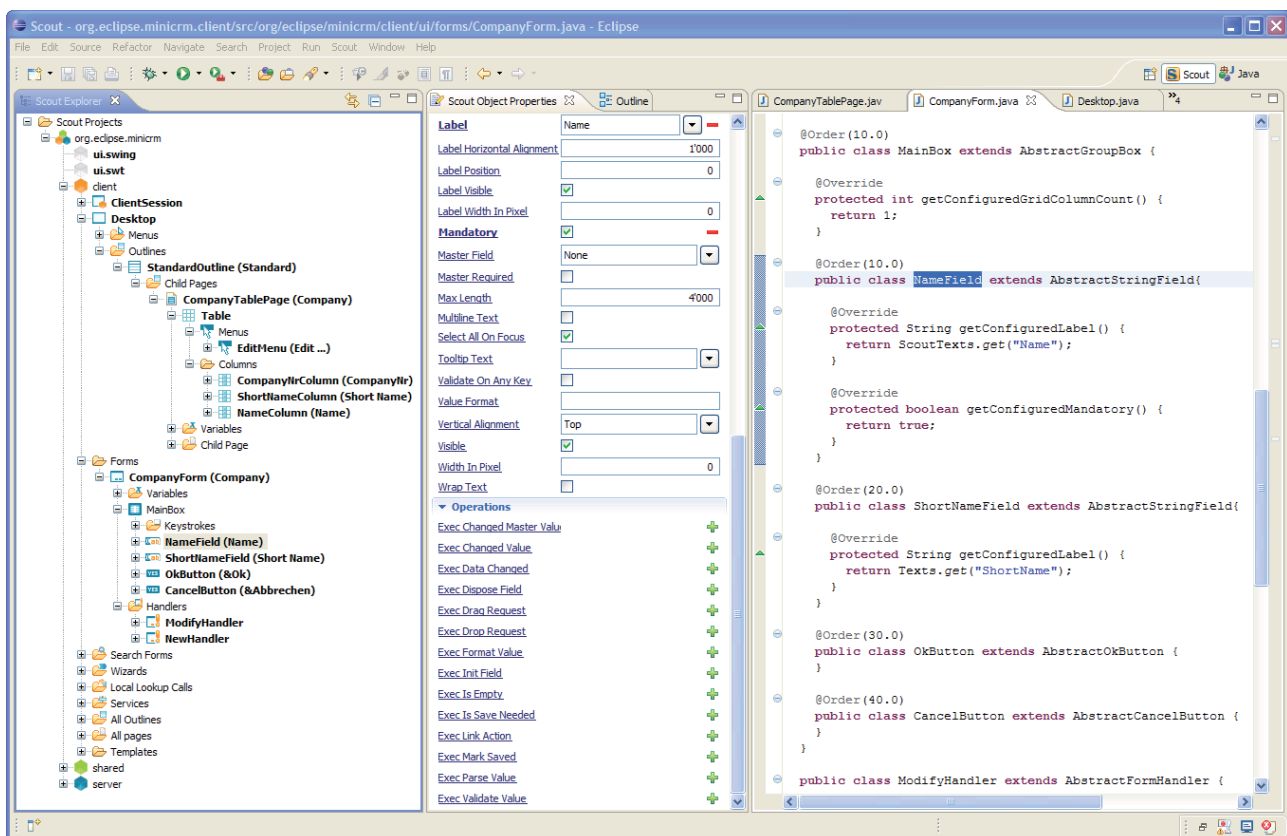
## Keep your training costs low

The Scout SDK is the tooling provided with Eclipse Scout. It keeps working with Eclipse Scout as simple as possible. Navigation support for the application model and intuitive component wizards provide the ideal environment to beginners for building complete and high quality Scout applications.

The Scout SDK contains the Scout Explorer, the Scout Objects Properties view, and a wide number of wizards. In the Scout Explorer the user navigates through the application model. The Scout Objects Properties view allows direct access to the available Scout properties for the selected element in the Scout Explorer. The Wizards support the creation of application components such as dialogs on the client side or services on the server side by generating the necessary Java code.

The Scout SDK provides round trip engineering for the application model and the Java source files. This is achieved through parsing all Java source files in real time and presenting the result in the Scout Explorer and the Scout Object Properties view. Each developer in a team is free to decide on an individual basis to work in the Scout perspective, the Java perspective, or to switch back and forth between the two.

And, best of all, Java developers who are new to Scout may take full advantage of pre-existing training and experience in Java and/or the Eclipse technology.



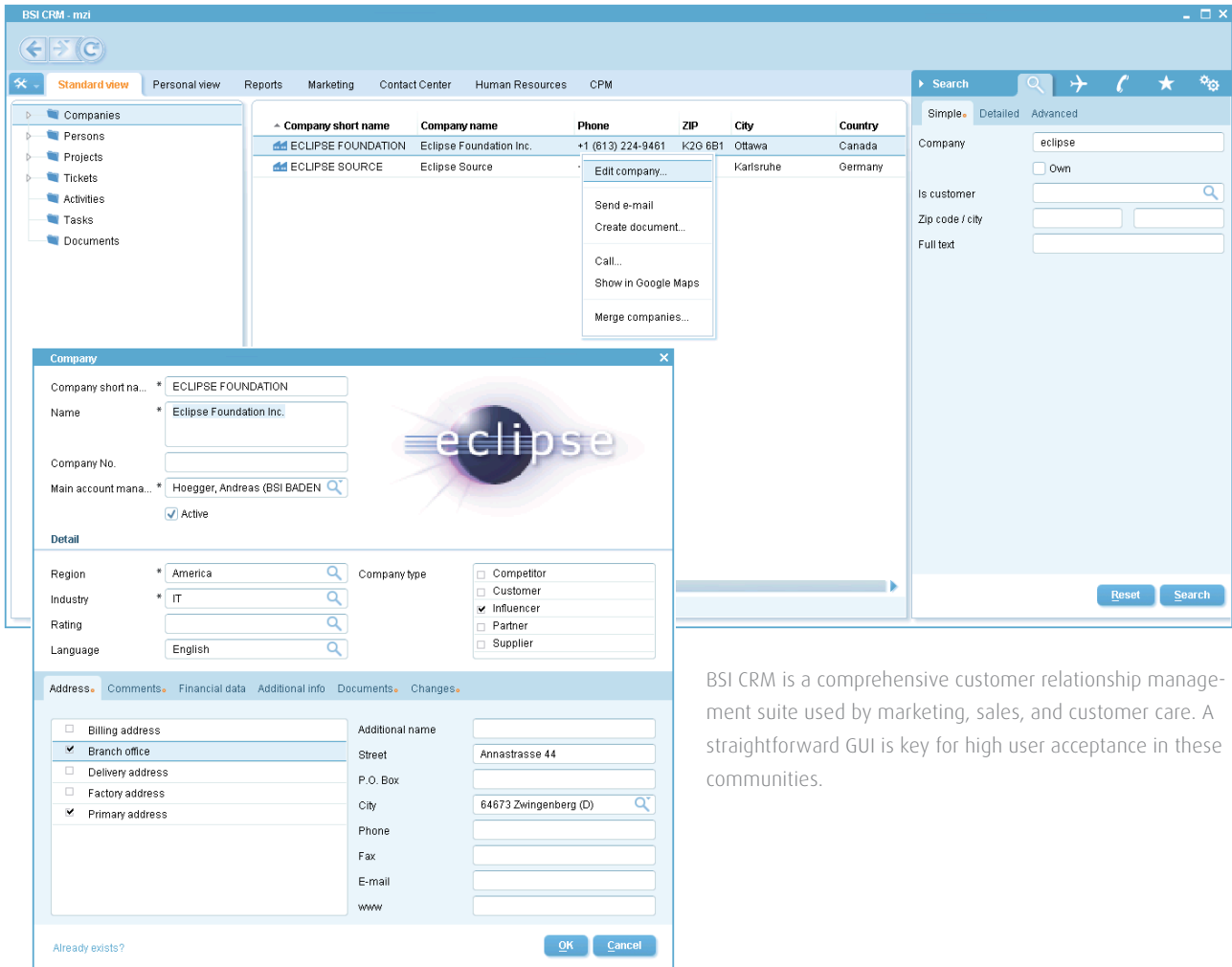
This screenshot of the Scout SDK shows how a dialogue form is created: the specifications of the NameField highlighted in the Scout Explorer are listed in detail in the Scout Object Properties view and shown as Java code in the right column.

# Use Case BSI CRM

## Rely on production quality

We believe in Eclipse Scout because we experience its qualities every day.

At BSI we rely on the production quality of the Scout framework. While we gather requirements in workshops with our clients we already start building prototypes using dummy services and test data to validate our client's ideas. As the project moves along and the specification solidifies, we refine the software to the final customer application.



BSI CRM is a comprehensive customer relationship management suite used by marketing, sales, and customer care. A straightforward GUI is key for high user acceptance in these communities.

### Three flagship products, twenty applications, twenty thousand end users

All of BSI's flagship products, BSI CRM, BSI Contact, and BSI CTMS are based on Eclipse Scout. We are fully committed to further developing this framework. Benefits of Scout include savings in cost and development time, user friendly interfaces, flexible integration into existing software environments, and fast incorporation of new employees into running projects. We may be an Eclipse newbie, but we're old hands in business.

BSI Business Systems Integration AG  
www.bsiag.com/eclipse  
www.eclipse.org/scout

