

Outline

✦ Introduction

- ✦ To introduce the Eclipse platform and PTP

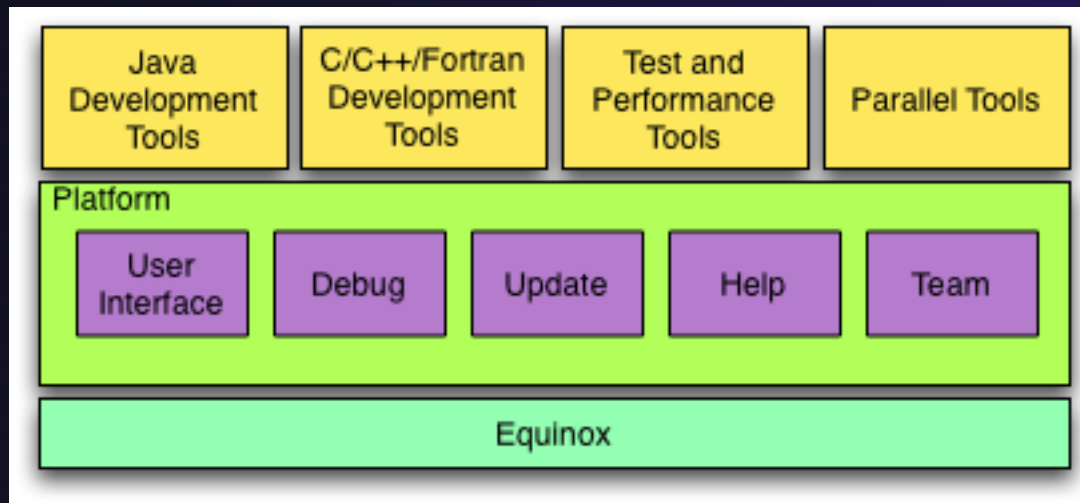
✦ Featured demos

- ✦ Jeff Overbey (U Illinois) – Parallel tools overview
- ✦ Alan Humphrey (U Utah) - GEM
- ✦ Wyatt Spear (U Oregon) – External Tools Framework and TAU
- ✦ Steve Brandt – (LSU) – Mojave – Cactus & Eclipse
- ✦ Galen Arnold (U Illinois) – Linux tools

✦ Wrapup

What is Eclipse?

- ✦ A vendor-neutral open-source workbench for multi-language development
- ✦ A extensible platform for tool integration
- ✦ Plug-in based framework to create, integrate and utilize software tools

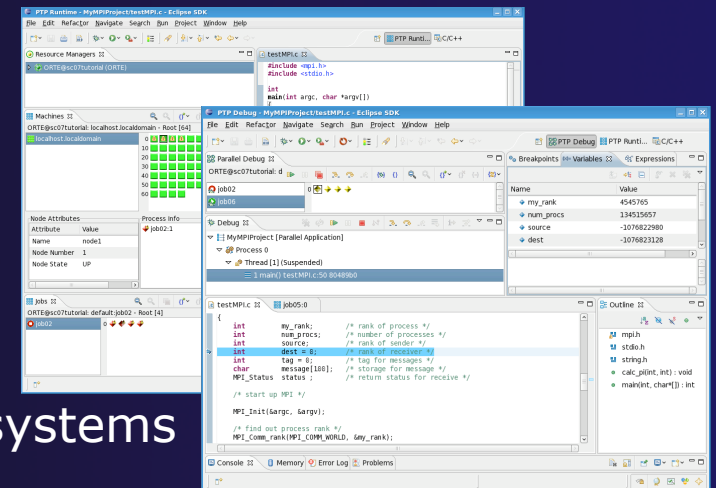


Eclipse Features

- ✦ Full development lifecycle support
- ✦ Revision control integration (CVS, SVN, Git)
- ✦ Project dependency management
- ✦ Incremental building
- ✦ Content assistance
- ✦ Context sensitive help
- ✦ Language sensitive searching
- ✦ Multi-language support
- ✦ Debugging

Parallel Tools Platform (PTP)

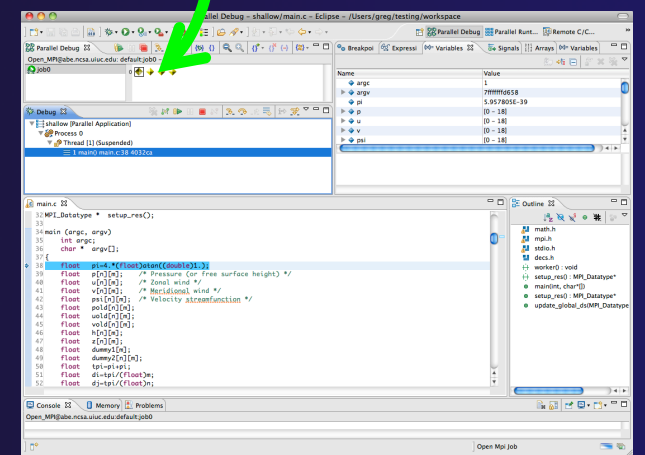
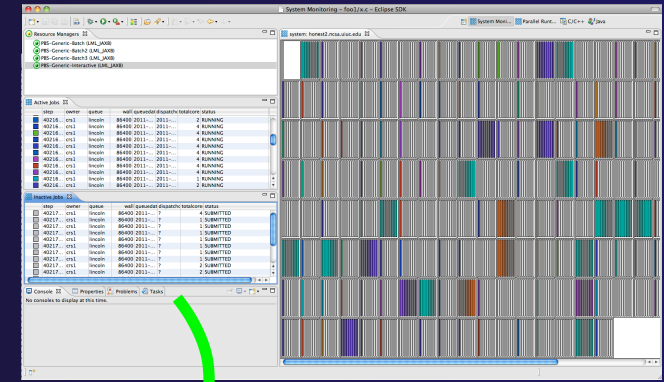
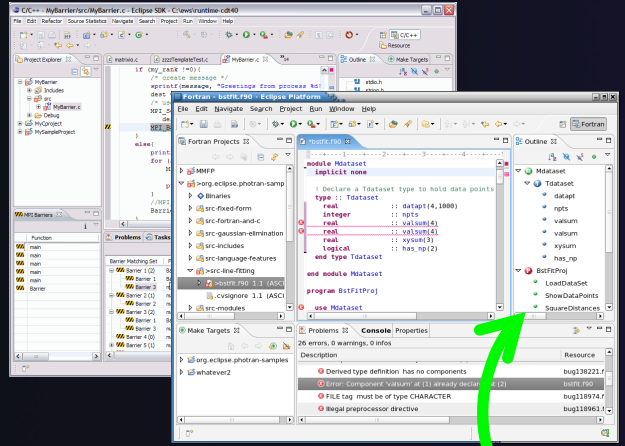
- ★ The Parallel Tools Platform aims to provide a highly integrated environment specifically designed for parallel application development
- ★ Features include:
 - ★ An integrated development environment (IDE) that supports a wide range of parallel architectures and runtime systems
 - ★ A scalable parallel debugger
 - ★ Parallel programming tools (MPI, OpenMP, UPC, etc.)
 - ★ Support for the integration of parallel tools
 - ★ An environment that simplifies the end-user interaction with parallel systems
- ★ <http://www.eclipse.org/ptp>



Eclipse PTP Family of Tools

Coding & Analysis
(C, C++, Fortran)

Launching & Monitoring

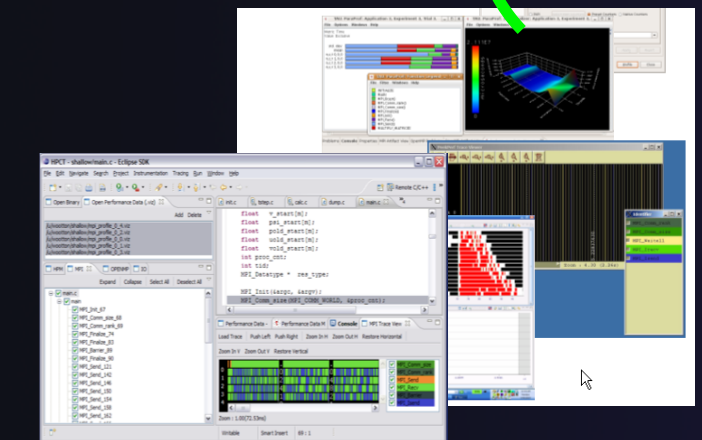


Performance Tuning
(TAU, PPW, ...)

Parallel Debugging

Introduction

Intro-5



Outline

✦ Introduction

- ✦ To introduce the Eclipse platform and PTP

✦ Featured demos

- ✦ Jeff Overbey (U Illinois) – Parallel tools overview
- ✦ Alan Humphrey (U Utah) - GEM
- ✦ Wyatt Spear (U Oregon) – External Tools Framework and TAU
- ✦ Steve Brandt – (LSU) – Mojave – Cactus & Eclipse
- ✦ Galen Arnold (U Illinois) – Linux tools

✦ Wrapup

Online Information

- ✦ Information about PTP
 - ✦ PTP online help
 - ✦ <http://help.eclipse.org>
 - ✦ Main web site for downloads, documentation, etc.
 - ✦ <http://eclipse.org/ptp>
 - ✦ Wiki for designs, planning, meetings, etc.
 - ✦ <http://wiki.eclipse.org/PTP>
- ✦ Information about Photran
 - ✦ Main web site for downloads, documentation, etc.
 - ✦ <http://eclipse.org/photran>

Mailing Lists

★ User Mailing Lists

★ PTP

★ <http://dev.eclipse.org/mailman/listinfo/ptp-user>

★ Photran

★ <http://dev.eclipse.org/mailman/listinfo/photran>

★ Major announcements (new releases, etc.) - low volume

★ <http://dev.eclipse.org/mailman/listinfo/ptp-announce>

★ Developer Mailing Lists

★ Developer discussions - higher volume

★ <http://dev.eclipse.org/mailman/listinfo/ptp-dev>

Getting Involved

- ✦ See <http://eclipse.org/ptp>
- ✦ Read the developer documentation on the wiki
 - ✦ <http://wiki.eclipse.org/PTP>
- ✦ Join the mailing lists
- ✦ Attend the monthly developer meetings
 - ✦ Conf Call Monthly: Second Tuesday, 1:00 pm ET
 - ✦ Details on the PTP wiki
- ✦ Attend the monthly user meetings
 - ✦ Teleconf Monthly: 4th Wednesday, 1:00 pm ET
 - ✦ Details on the PTP wiki

PTP will only succeed with your participation!